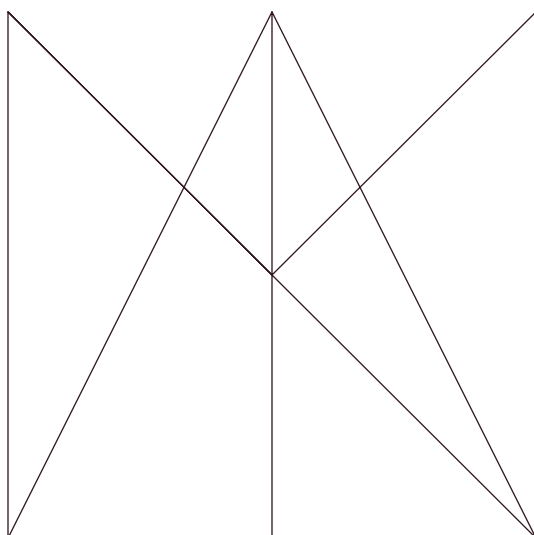


ANIMA / ANIMA ∞



ANIMA / ANIMA  $\infty$



---

Viviamo dentro spazi.

Lo spazio della nostra quotidianità, lo spazio della nostra casa e delle nostre idee, lo spazio della nostra vita. Spazi che non avrebbero cuore e senso se non fossero lo specchio di ciò che siamo e sentiamo.

**Anima** nasce da questa certezza e dalla decennale maestria artigiana di chi sa lavorare e plasmare con passione la materia inerte, donandole vita e calore.

**Anima** è frutto di mani esperte, un'unicità preziosa che si esprime attraverso ogni singola sfumatura e variazione di tono, segno tangibile della vitalità del processo artigianale. Il nostro augurio è che **Anima** possa "animare" gli spazi del nostro vivere, rendendo protagonisti pensieri, desideri e passioni.

---

We live in spaces.

The space of our daily habits, the space of our home and ideas, the space of our life.

These spaces would be heartless and meaningless if they were not the mirror of our way of being and feeling.

**Anima** was born from this certainty and from many years of hand-crafted mastery made by people who know how to mould and work on a lifeless stone, giving it life and warmth.

**Anima** is a unique result of the work of skillful hands: a precious uniqueness that shows palpable signs of the liveliness of the homemade process through every single shade and change of tone. Our wish is **Anima** would liven up the spaces of your life, making your thoughts, desires and passions its main characters.

# ANIMA

---

La cementina è un materiale ottenuto dall'impasto di acqua, cemento bianco, polvere di marmo, polveri di minerali duri e pigmenti naturali. Tale impasto viene lavorato allo stato liquido, colato in apposite forme e successivamente vibrato e pressato.

**Anima** è l'unico esempio al mondo di cementina monostrato full body, ha uno spessore ridotto della metà rispetto alle cementine tradizionali.

The cement tile **Anima** is obtained from the mixture of water, white cement, marble dust, powders of hard minerals and natural pigments. This dough is worked to the liquid state, cast in special shapes and after which vibrated and pressed. Grandinetti is the only in the world to produce cement tiles single-layer full body with a thickness reduced by half compared to the traditional cement tiles.



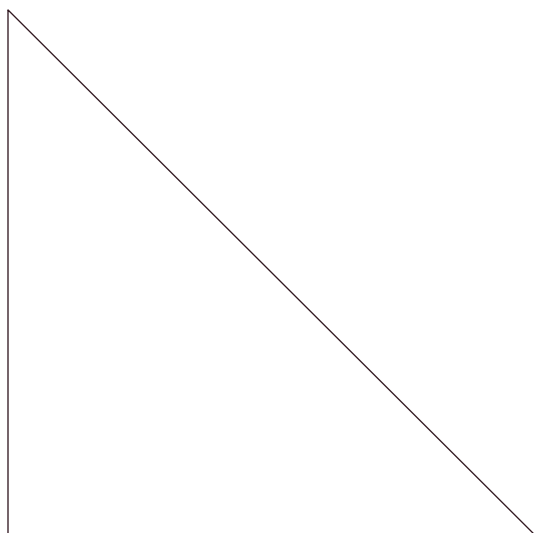
# ANIMA ∞

---

**Anima ∞** è la soluzione per i pavimenti, i rivestimenti ed in genere ogni forma e superficie, è composta da una malta cementizia additivata a basso spessore e da una protezione superficiale trasparente poliuretanica eco-compatibile. Ispirato al *Pastellone Veneziano* e dal *Tadelakt Marocchino* prende da questi la bellezza, la profondità di colore, la straordinaria versatilità e li rende fruibili per ogni luogo indoor e outdoor. **Anima ∞** è ideale per il ripristino di pavimentazioni esistenti in piastrelle, lo spessore totale è di max 3 mm.

**Anima ∞** is the solution for floor and wall covering of any shape and surface, is a low thickness additivated cement coating with a polyurethane, eco-compatible, transparent surface protection. Inspired by the *Pastellone Veneziano* and the *Moroccan Tadelakt* takes from these beauty, depth of color, versatility and makes them accessible to every place indoor and outdoor. **Anima ∞** is also indicated for the covering of existing floors, the maximum thickness of the coating is 3 mm.



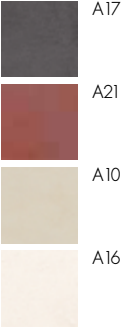


**STUDIO**





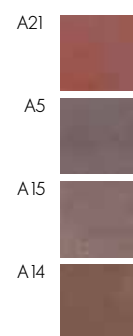
**A21** Red Clay + **A10** White Rope + **A17** Pitch Black





Pavimento e sedia rivestita **A19** ∞ Cinder Rose



**A21** Red Clay

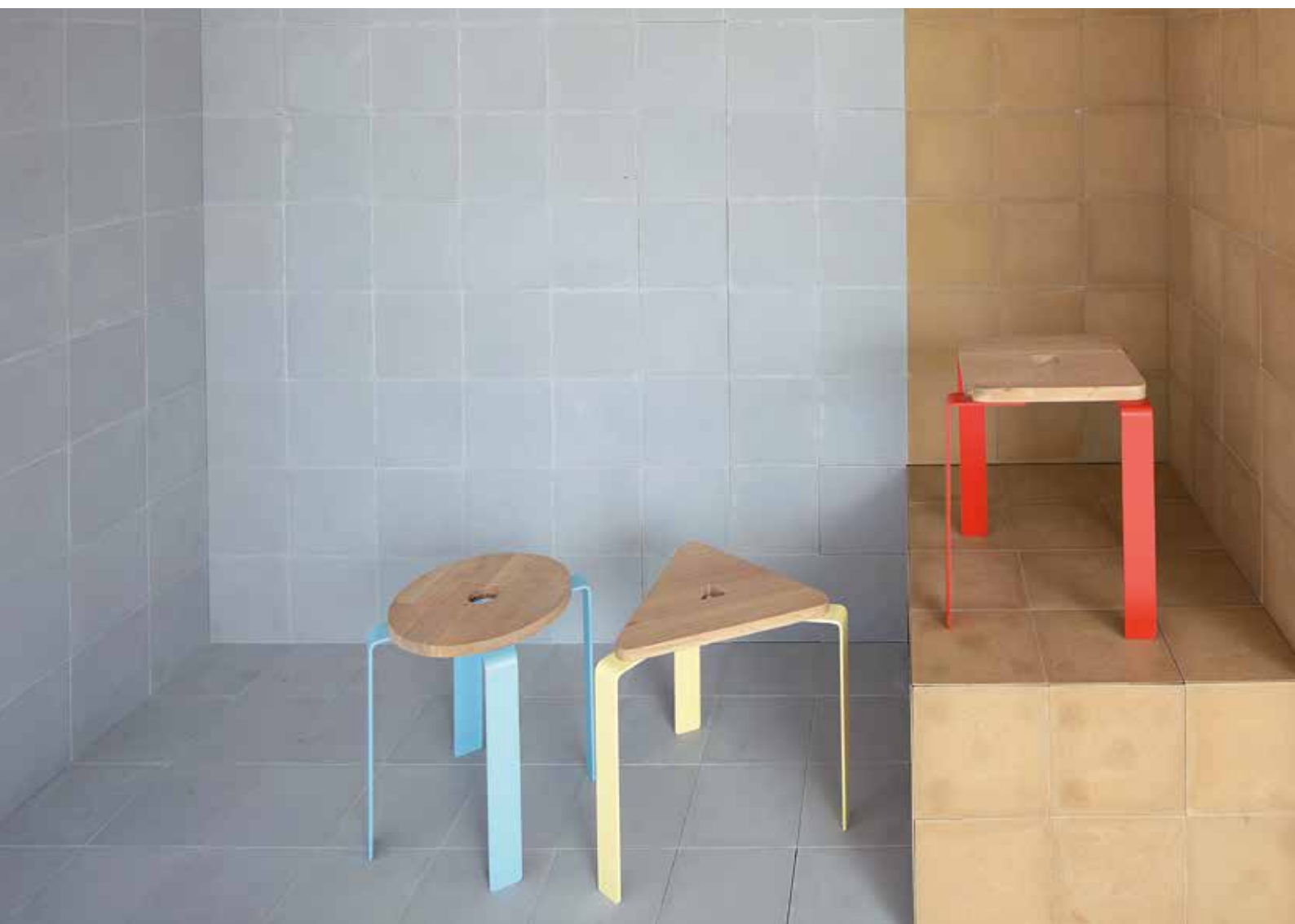




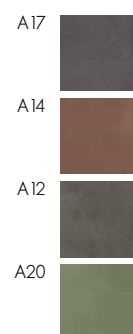
Pavimento **A17** Pitch Black  
Rivestimento **A17** ∞ Pitch Black



**A1** Cold Gray + **A3** India Yellow



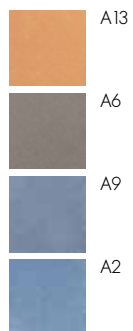
**A17** Pitch Black  
Piedistallo gra veneziana **208** San Giuliano





Pavimento **A13** Orange Sun + **A2** Cloudy Blue

Rivestimento **A13** Orange Sun + **A2** Cloudy Blue + **A13** ∞ Orange Sun

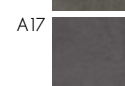
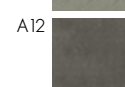
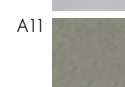
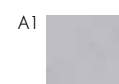
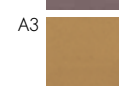






← **A15** Golden Bronze

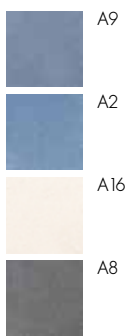
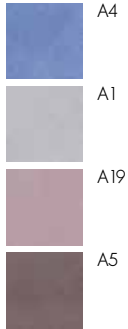
↓ **A1** ∞ Cold Gray

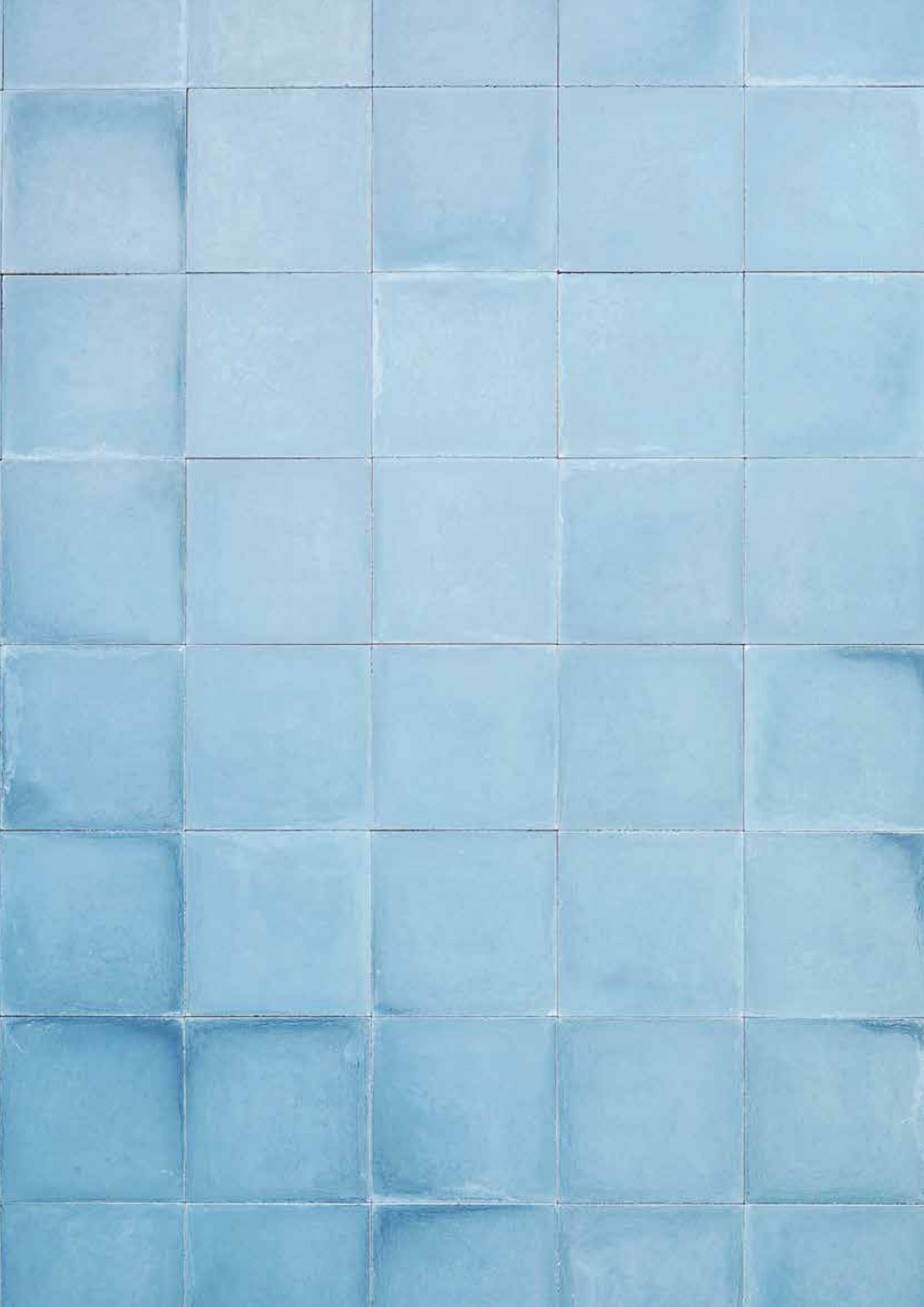




**A9** Sugar Paper →

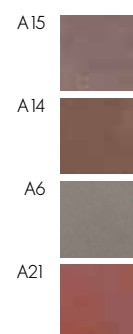
**A4** Azul Blue + **A1** Cold Gray ↓





**A3** India Yellow

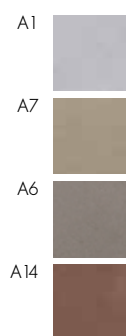


**A21** Red Clay

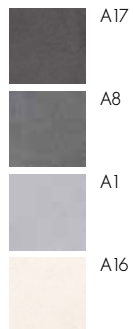




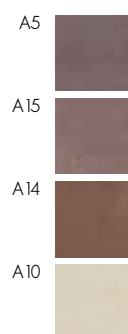
**A1** Cold Gray + **A6** Gray Smoke



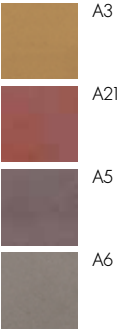
**A17** Pitch black + **A16** White Milk



A15 Golden Bronze



**A21** ∞ Red Clay + **A5** ∞ Aubergine







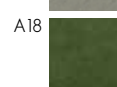
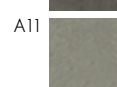
**A7** Dove Gray



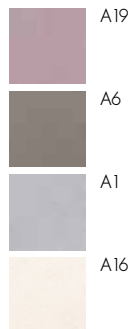
**A9** Sugar Paper





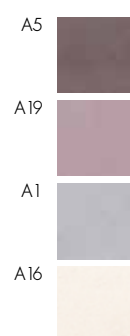
← **A1** Cold Gray↓ **A18** Emerald Green + **A20** Green Hill

**A19** Cinder Rose + **A6** Gray Smoke + **A1** Cold Gray + **A16** White Milk



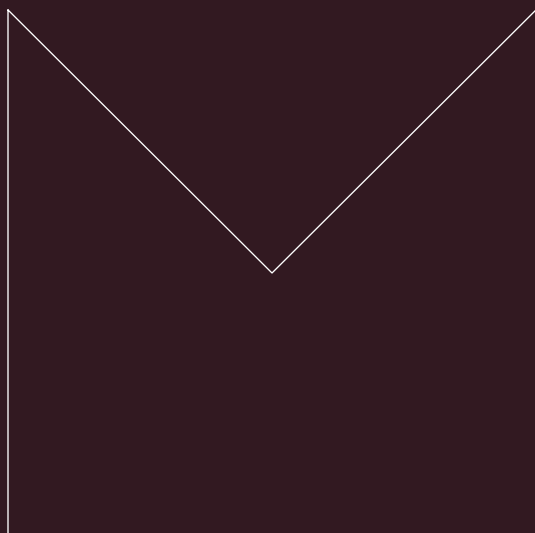


**A5** Aubergine + **A19** Cinder Rose





# PROGETTI



**A15** Golden Bronze





**A15** Golden Bronze



**A7** Dove Gray



**A7** Dove Gray



**A15** Golden Bronze







**A7** Dove Gray



**A3** India Yellow



**A7** Dove Gray



**A7** Dove Gray







**A17** Pitch Black





**A17** Pitch Black







Pavimento **A6** ∞ Gray Smoke

Rivestimento scala colore su misura **Anima** ∞ effetto "corten"



Pavimento **A6** ∞ Gray Smoke  
Rivestimento scala colore su misura **Anima** ∞ effetto "corten"







Pavimento e rivestimento **A7** ∞ Dove Gray



Pavimento e rivestimento caminetto **A7** ∞ Dove Gray



**A7** ∞ Dove Gray





A7 ∞ Dove Gray





Pavimento **A7** ∞ Dove Gray  
Rivestimento bagno colore su misura **Anima** ∞



Lavello e schienale **A7** ∞ Dove Gray



Lavello **A10** ∞ White Rope



Lavello colore su misura **Anima** ∞









Lavello colore su misura **Anima** ∞



Rivestimento scaffale **A19** ∞ Cinder Rose







Rivestimento **A10** ∞ White Rope





Rivestimento **A10** ∞ White Rope

**A6** Gray Smoke



**A6** Gray Smoke



Pavimento e rivestimento scala colore su misura **Anima** ∞



Pavimento e rivestimento scala colore su misura **Anima** ∞





Pavimento e rivestimento scala colore su misura **Anima** ∞







Rivestimento **A10** ∞ White Rope

Rivestimento **A10** ∞ White Rope









Rivestimento **A17** ∞ Pitch Black  
Pavimento graniglia tappeto **T3** / Tinta unita **114** Occhialino



Rivestimento **A16** ∞ White Milk + **A17** ∞ Pitch Black

Pavimento graniglia tappeto **T3** / Tinta unita **114** Occhialino









Pavimento e rivestimento **A10** White Rope + **A20** ∞ Green Hill  
Rivestimento vasca e lavabo **A10** ∞ White Rope





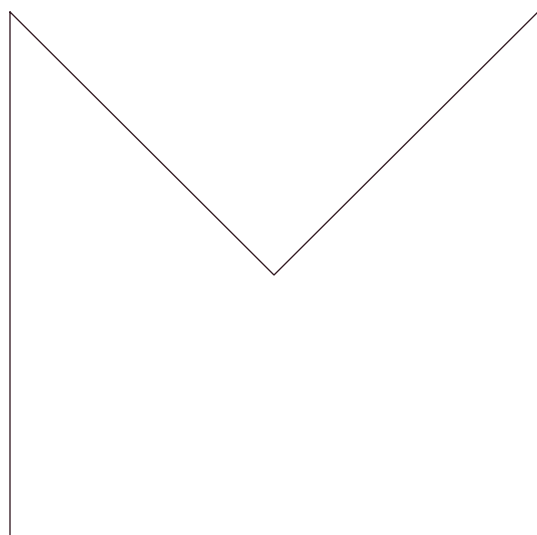


Pavimento e rivestimento **A10** White Rope + **A20** ∞ Green Hill  
Rivestimento vasca e lavabo **A10** ∞ White Rope

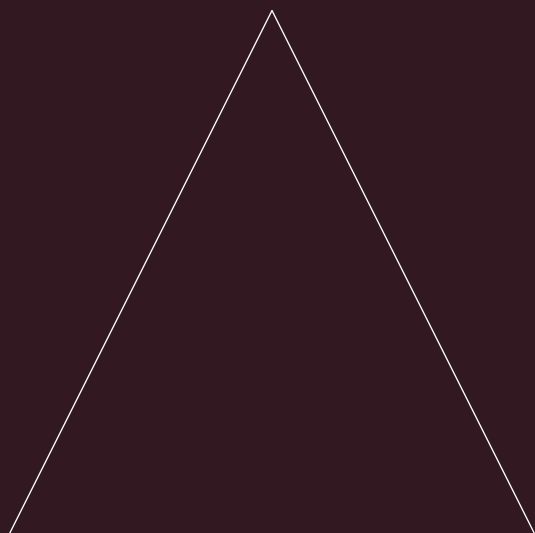
Rivestimento scala **A16** ∞ White Milk





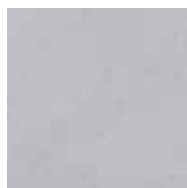


# INFORMAZIONI



# COLORI

/ COLORS



**A1**  
Cold Gray



**A2**  
Cloudy Blue



**A3**  
India Yellow



**A4**  
Azul Blue



**A5**  
Aubergine



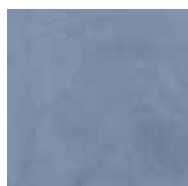
**A6**  
Gray Smoke



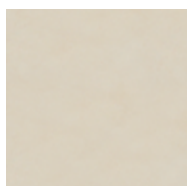
**A7**  
Dove Gray



**A8**  
Blue Black



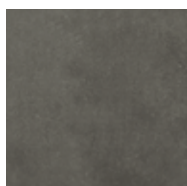
**A9**  
Sugar Paper



**A10**  
White Rope



**A11**  
Olive Green



**A12**  
Green Wood



**A13**  
Orange Sun



**A14**  
Coppery Brown



**A15**  
Golden Bronze



**A16**  
White Milk



**A17**  
Pitch Black



**A18**  
Emerald Green



**A19**  
Cinder Rose



**A20**  
Green Hill



**A21**  
Red Clay

# SPECIFICHE TECNICHE FORMATI E SPESSORI

## / TECHNICAL SHEETS DIMENSIONS AND THICKNESS

### ANIMA

Cementine monostrato (tutta massa, unico impasto).  
La gamma è formata da 21 colori proposti e da un'infinita varietà di colori personalizzati (per la realizzazione si fa riferimento cartella colori RAL, non tutti i colori sono riproducibili).

#### Finiture

- 1 grezza (da trattare dopo la posa in opera)
- 2 cerata (cera, da realizzare in opera dopo la posa)
- 3 trattata (finitura sigillante acrilica)

#### Specifiche tecniche

Prodotto completamente artigianale, non soggetto a normativa europea.

#### Colorazione

La colorazione è data dagli ossidi naturali e dal mix di più leganti.

#### Superficie

La superficie si presenta non uniforme, con increspature e fori, alonature, puntinature, rigonfiature e sbecature.

#### Campi di applicazione

Pavimenti e rivestimenti per interni.

#### Caratteristiche del materiale

Colori resistenti alla luce, ottima resistenza all'usura ed alla flessione, ottime caratteristiche termiche, facile da pulire.

#### Formati

20x20, spessore 1,3 cm, peso 32 kg/mq  
60x60, spessore 2 cm, peso 50 kg/mq  
Esagono lato 11,5 cm, spessore 1,3 cm, peso 32 kg/mq

#### Istruzioni posa, trattamento e manutenzione

Vedi "conoscere la graniglia"  
[www.grandinetti.it/pdf/conoscere\\_la\\_graniglia.pdf](http://www.grandinetti.it/pdf/conoscere_la_graniglia.pdf)

### ANIMA

Single layer cement tiles (full body).  
The colour range is made up of 21 colours and an infinite range of custom colours (for realisation refer to the RAL colour card; not all the colours are reproducible).

#### Finishes

- 1 untreated (to be treated after laying)
- 2 waxed (wax, realization after laying)
- 3 treated (acrylic sealing finish)

#### Technical specifications

100% artisanal product, not subject to any European regulations.

#### Colouring

With natural pigments and a mix of several binders.

#### Surface

Uneven with ripples and holes, haloes, chipping, bulge and stipples.

#### Fields of application

Indoor floor and wall covering.

#### Material characteristics

Light-resistant colours, excellent resistance to wear and flexure, excellent thermal characteristics, easy to clean.

#### Size

20x20, thickness 1,3 cm, weight 32 kg/mq  
60x60, thickness 2 cm, weight 50 kg/mq  
Hexagon side 11,5 cm, thickness 1,3 cm, weight 32 kg/mq

#### Laying and maintenance instructions

See our brochure "conoscere la graniglia"  
[www.grandinetti.it/pdf/conoscere\\_la\\_graniglia.pdf](http://www.grandinetti.it/pdf/conoscere_la_graniglia.pdf)

### ANIMA ∞

Soluzione per pavimenti e rivestimenti in malta cementizia a basso spessore (massimo 3 mm) adatta a tutte le superfici (cemento, legno, gres, metallo, vetro...), realizzabile nei colori "Anima" ed in un'infinita gamma di colori su misura.

#### Finiture

Trattata con finitura poliuretanica bicomponente ad altissima resistenza.

#### Specifiche tecniche

Prodotto completamente artigianale, non soggetto normativa europea.

#### Colorazione

La colorazione è data dagli ossidi naturali e dal mix di più leganti.

#### Superficie

La superficie si presenta non uniforme, con increspature e fori, alonature, puntinature.

#### Campi di applicazione

Pavimenti e rivestimenti per interni, rivestimento di tops, mobili ecc.

#### Caratteristiche del materiale

Colori resistenti alla luce, ottima resistenza all'usura ed alla flessione, ottime caratteristiche termiche, facile da pulire.

#### Formati e spessori

Spessore 0,3 cm

### ANIMA ∞

Additivated low thickness cement coating (up to 3 mm) suitable for all surfaces (concrete, wood, tile, metal, glass...), achieved in the colors "Anima" and in an infinite range of customized colors.

#### Finishes

Treated with two-components polyurethane high resistance coating.

#### Technical specifications

100% artisanal product, not subject to any European regulations.

#### Colouring

With natural pigments and a mix of several binders.

#### Surface

Uneven with ripples and holes, haloes, chipping, bulge and stipples.

#### Fields of application

Indoor floor and wall covering, washbasin, countertops, furnishings...

#### Material characteristics

Light-resistant colours, excellent resistance to wear and flexure, excellent thermal characteristics, easy to clean.

#### Size

Thickness 0,3 cm



---

**Coordinamento**

Valentino Grandinetti

**Progetto grafico**

Numeroquattro

**direzione artistica**

Giuseppe Trivellini

**Fotografia**

Sabrina Vinci

Giuseppe Trivellini, SMV studio

Le case di Elixir

Claudio Ciabochi

**Ringraziamenti**

Sergio Ortolani

Giuseppe Trivellini, SMV studio

Wood About

Le case di Elixir

By Malene Birger

Arredotenda di Belfiore

Arch. Cristina Marinelli

Arch. Moira Giusepponi

Ristorante il melograno

Paolo Quinzi

Due A



---

**GRANDINETTI SRL**

via Orazio Marziario 2/4  
62027 San Severino Marche (MC)

tel +39 0733 645750  
fax +39 0733 979501  
[www.grandinetti.it](http://www.grandinetti.it)  
[grandinetti@grandinetti.it](mailto:grandinetti@grandinetti.it)

GRANDINETTI.IT